

# Terms of Use

All rights reserved. No part of this packet may be reproduced, stored in a retrieval system, or transmitted in any form by any means - electronic, mechanical, photo-copies, recording, or otherwise - without prior permission of the publisher, except as provided by US copyright law.

**Copyright © Natural Beach Living**

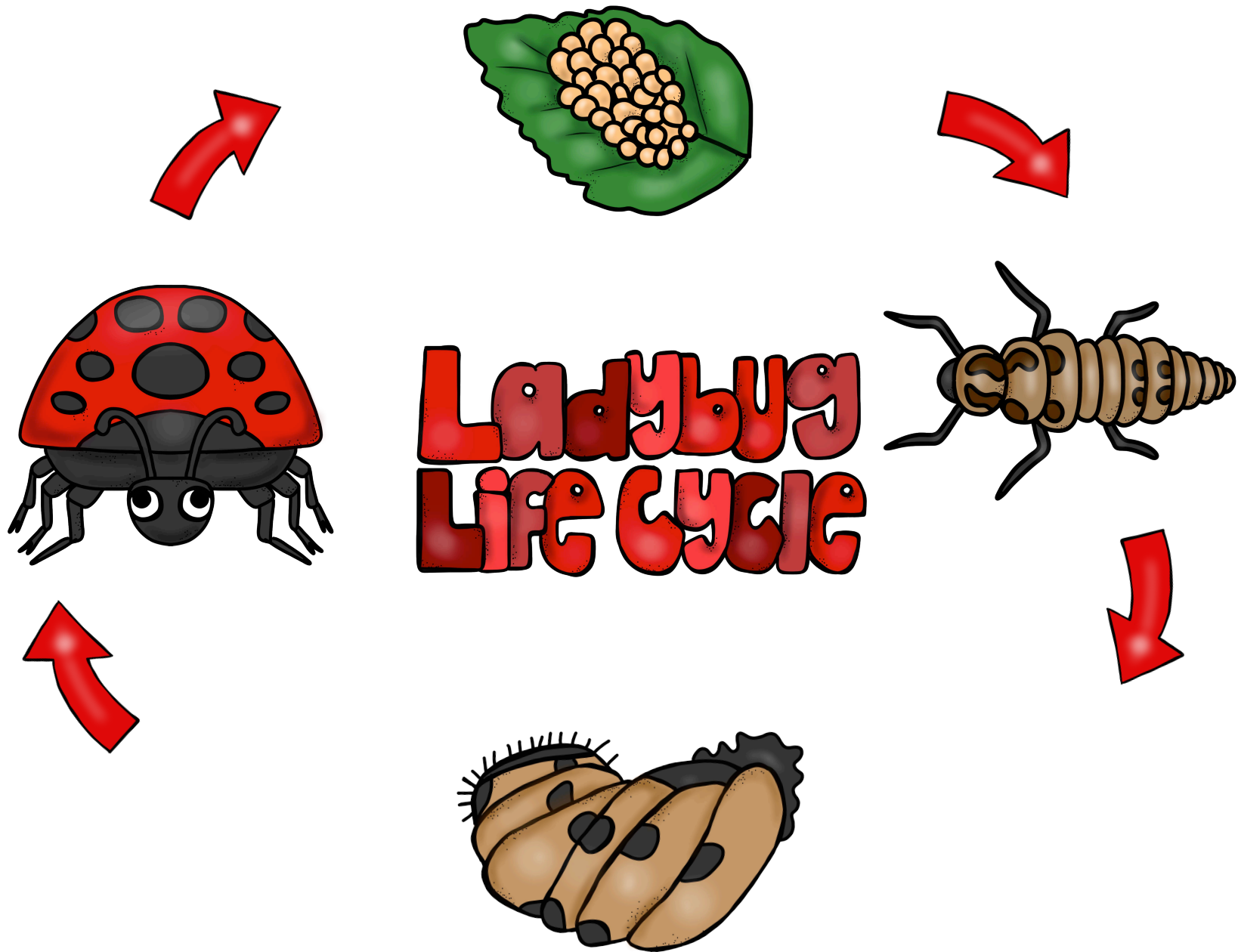
You are permitted to use this file for personal use only. You may download the file to your own computer and print it as many times as you need for your own family.

Please DO NOT edit or share the file. DO NOT store these on any website, forum, or other online venue. DO NOT present this file as your own creation. DO NOT resell or distribute to other people.

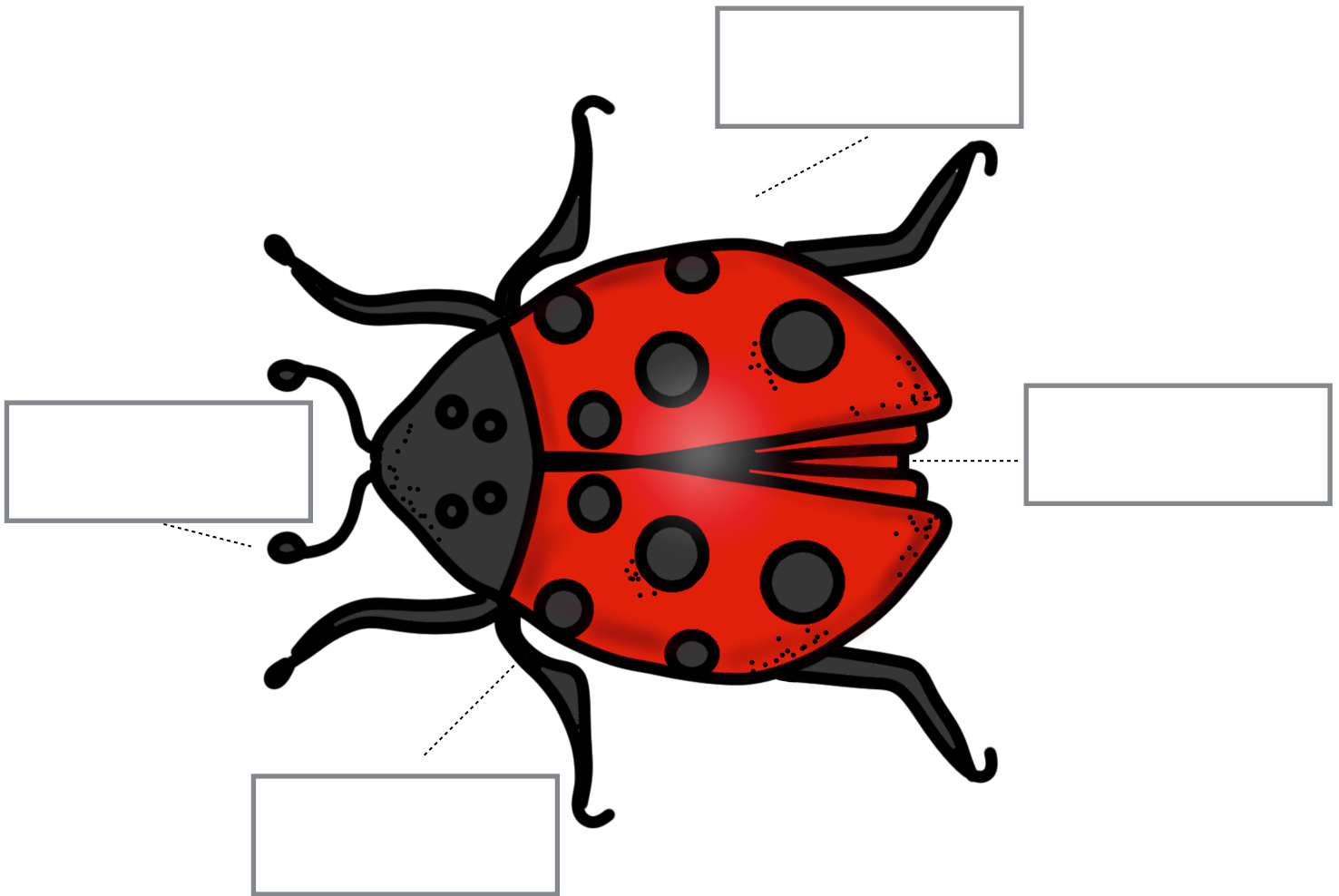
If you would like to share this file with others, please share the blog post link not the direct download link.

Clipart used: Educlips

Questions or concerns: [naturalbeachliving@gmail.com](mailto:naturalbeachliving@gmail.com) .



# Parts of a Ladybug



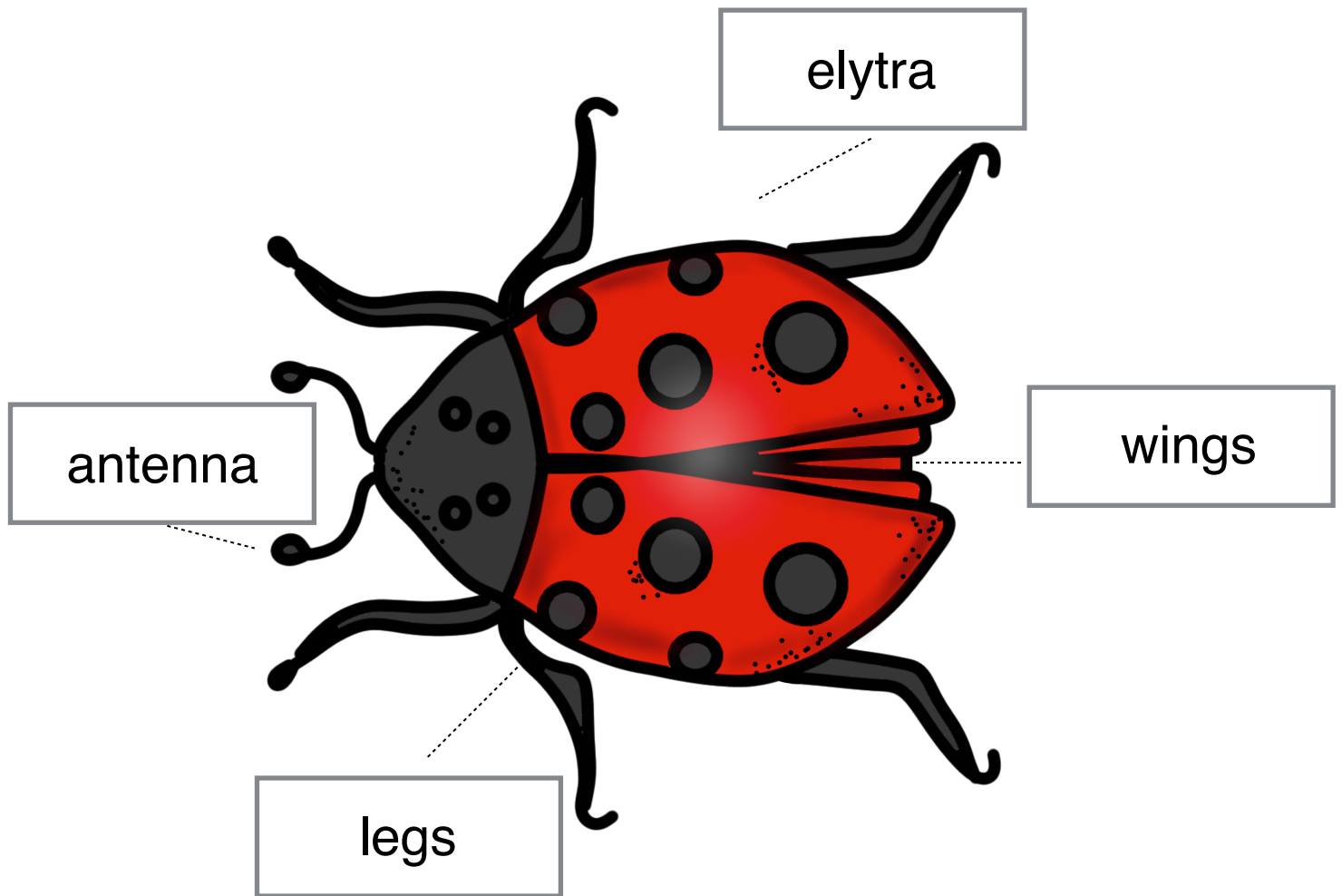
elytra

wings

legs

antenna

# Parts of a Ladybug



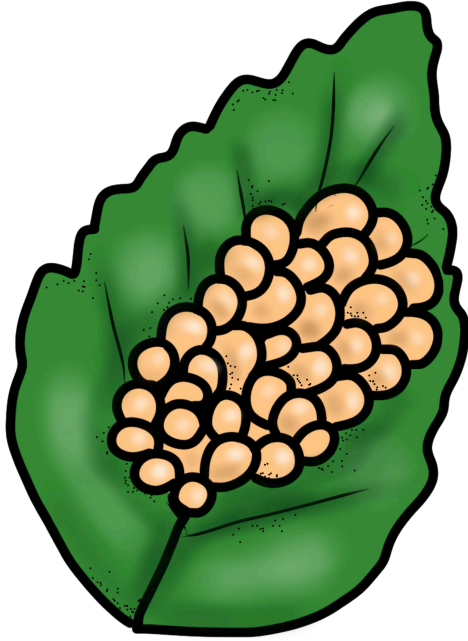
elytra

wings

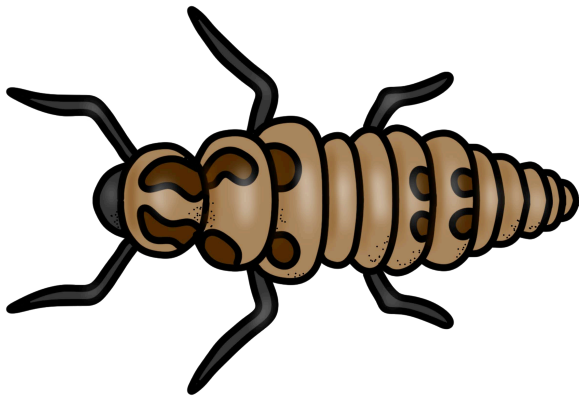
legs

antenna

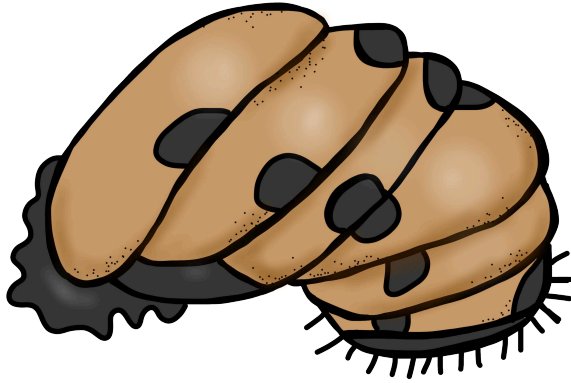
# Life Cycle of a Ladybug



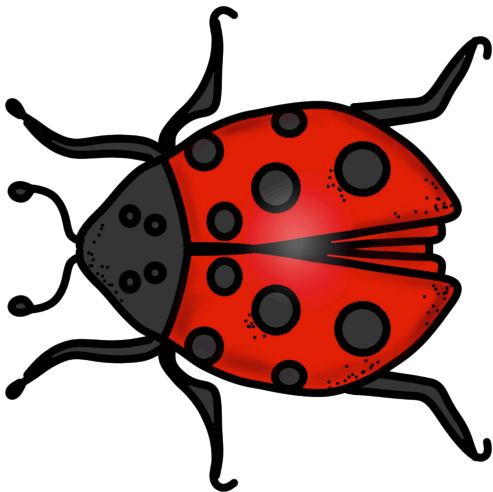
Ladybugs usually lay their eggs on the underside of a leaf. They take 3-5 days to hatch.



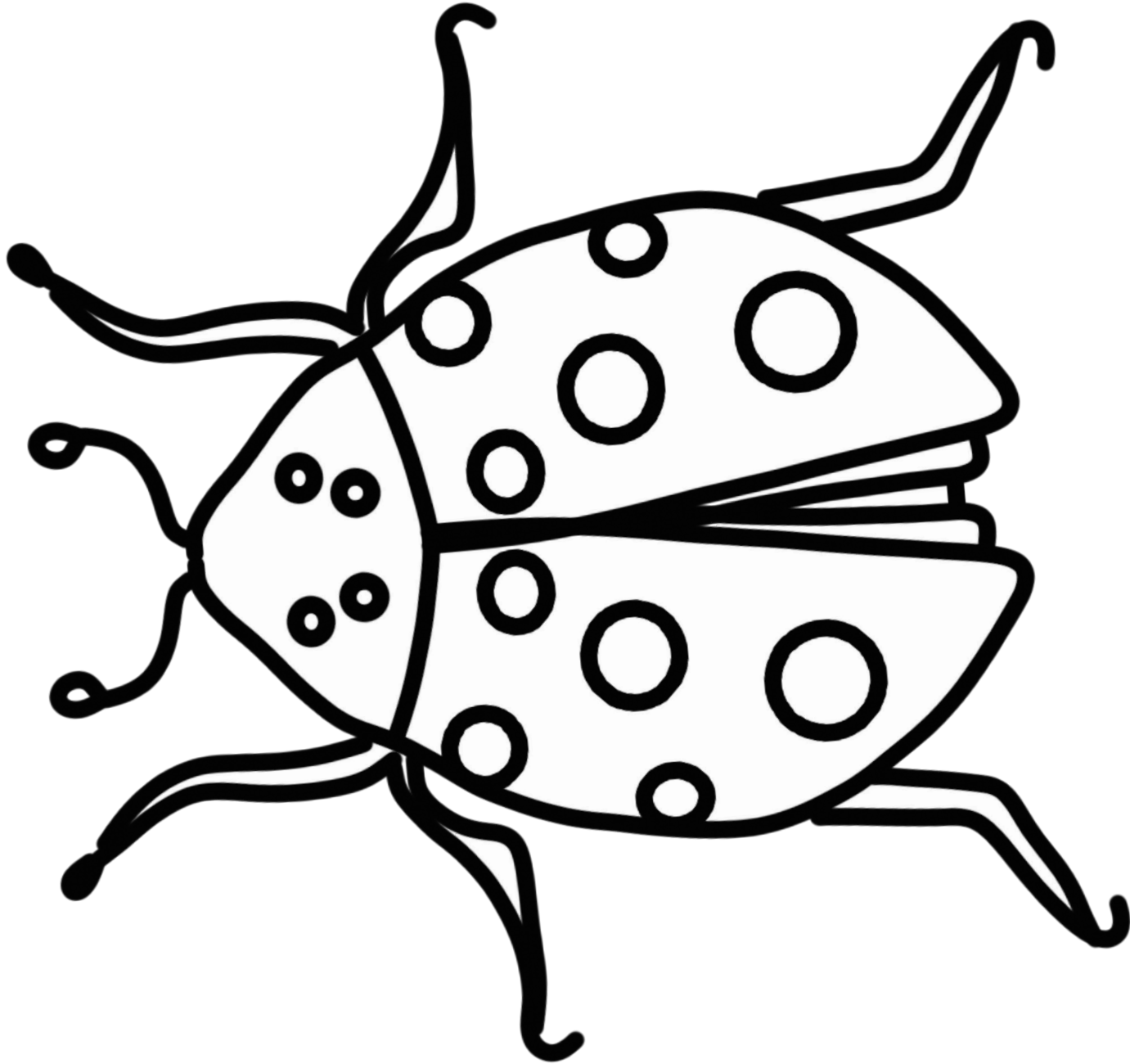
A larva hatches from the egg. It eats aphids. It will shed its skin several times as it grows.

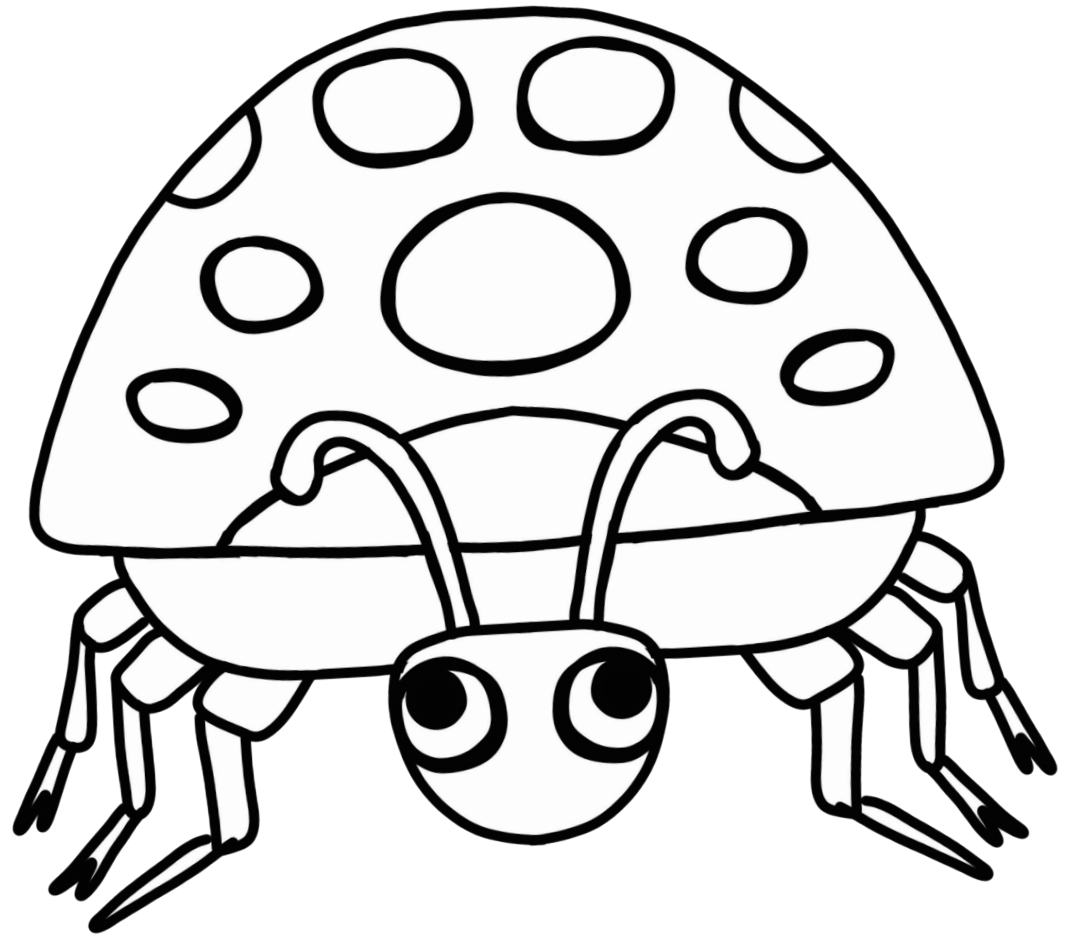
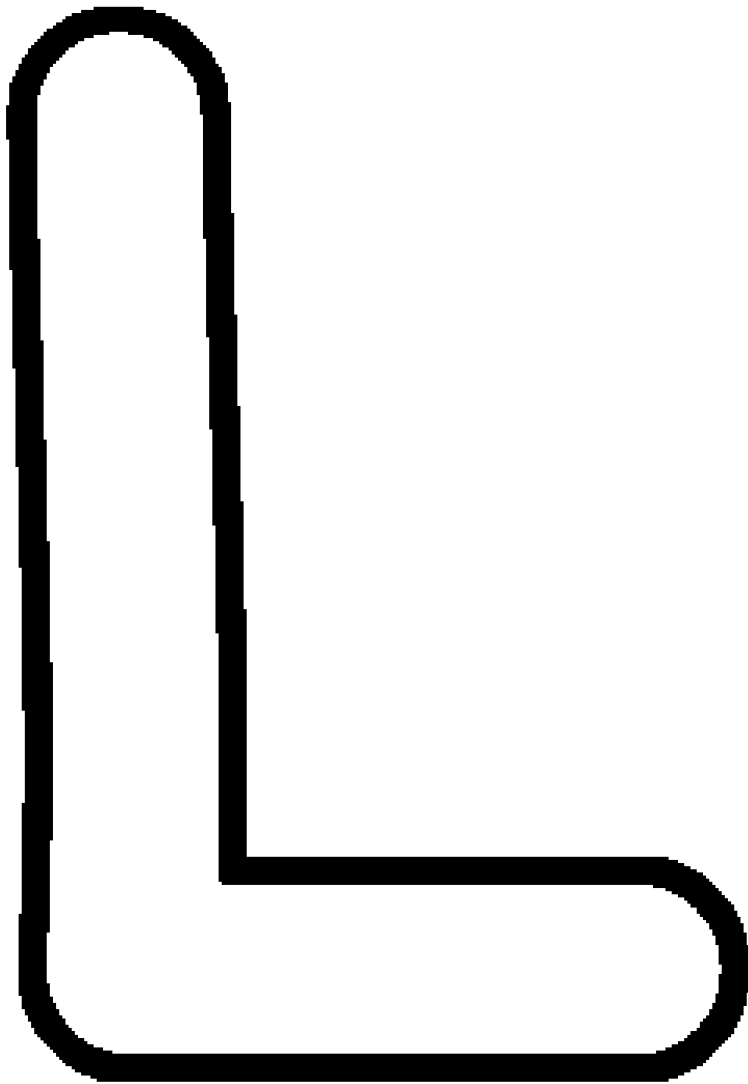


When it is big enough,  
it will attach itself to  
a leaf. It will shed its  
skin for the last time  
and become a pupa.



It will take the pupa  
about a week to  
transform into an  
adult ladybug.





Directions: Use do-a-dot markers to trace the letter. Color the ladybug.