

# Terms of Use

All rights reserved. No part of this packet may be reproduced, stored in a retrieval system, or transmitted in any form by any means - electronic, mechanical, photo-copies, recording, or otherwise - without prior permission of the publisher, except as provided by US copyright law.

**Copyright © Natural Beach Living**

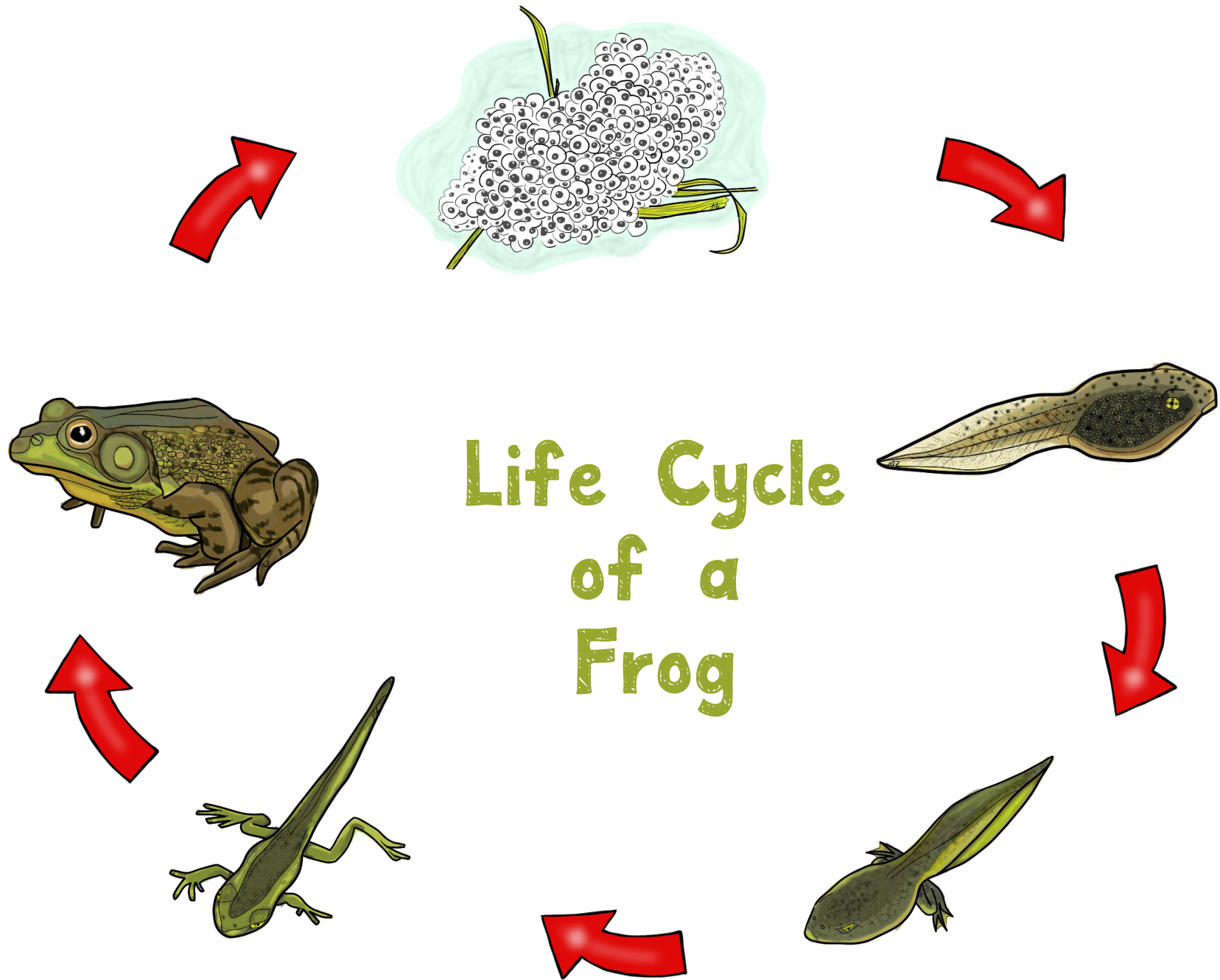
You are permitted to use this file for personal use only. You may download the file to your own computer and print it as many times as you need for your own family.

Please DO NOT edit or share the file. DO NOT store these on any website, forum, or other online venue. DO NOT present this file as your own creation. DO NOT resell or distribute to other people.

If you would like to share this file with others, please share the blog post link not the direct download link.

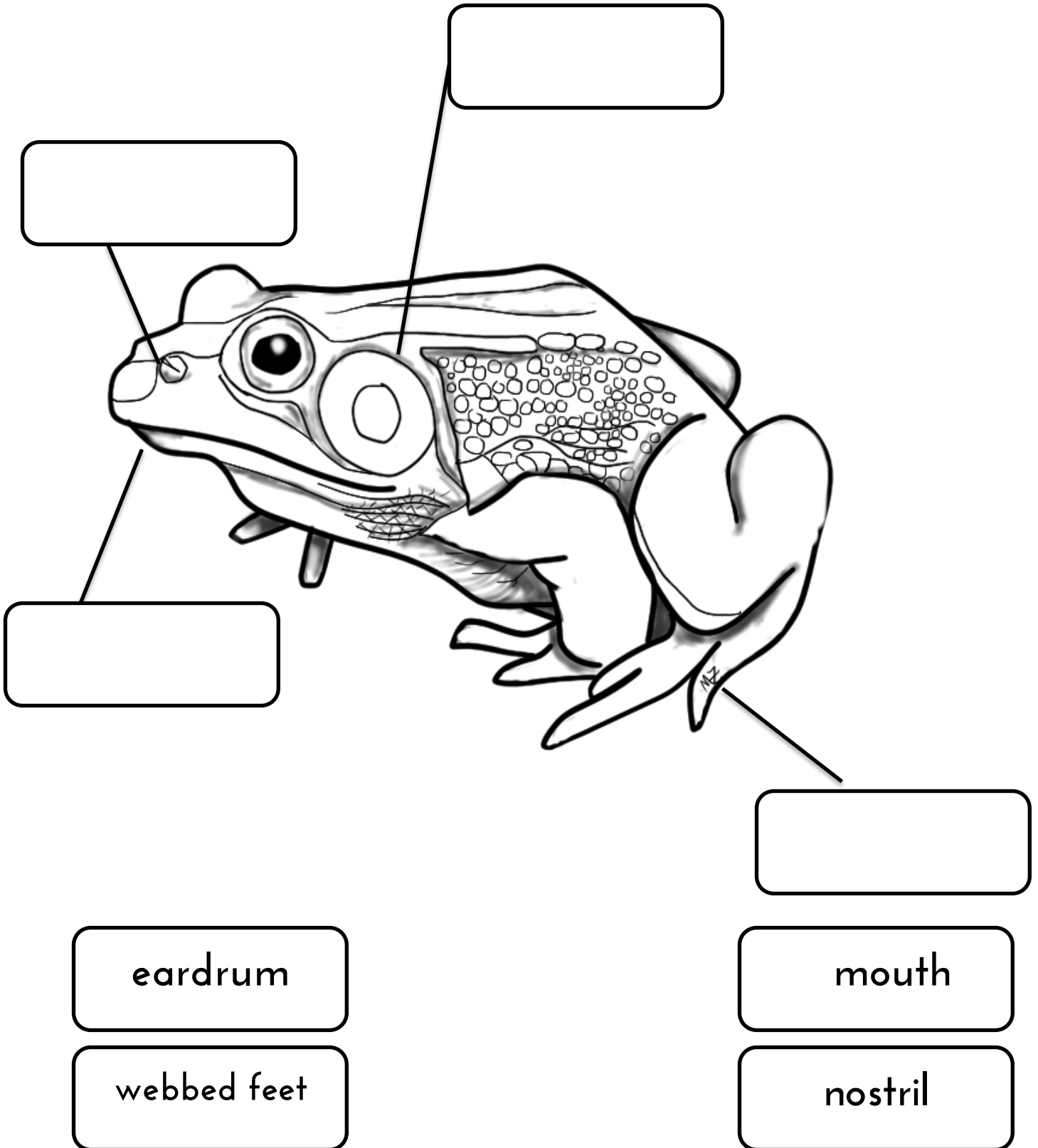
Clipart used: Getting Nerdy with Mel and Gerdy"

Questions or concerns: [naturalbeachliving@gmail.com](mailto:naturalbeachliving@gmail.com) .



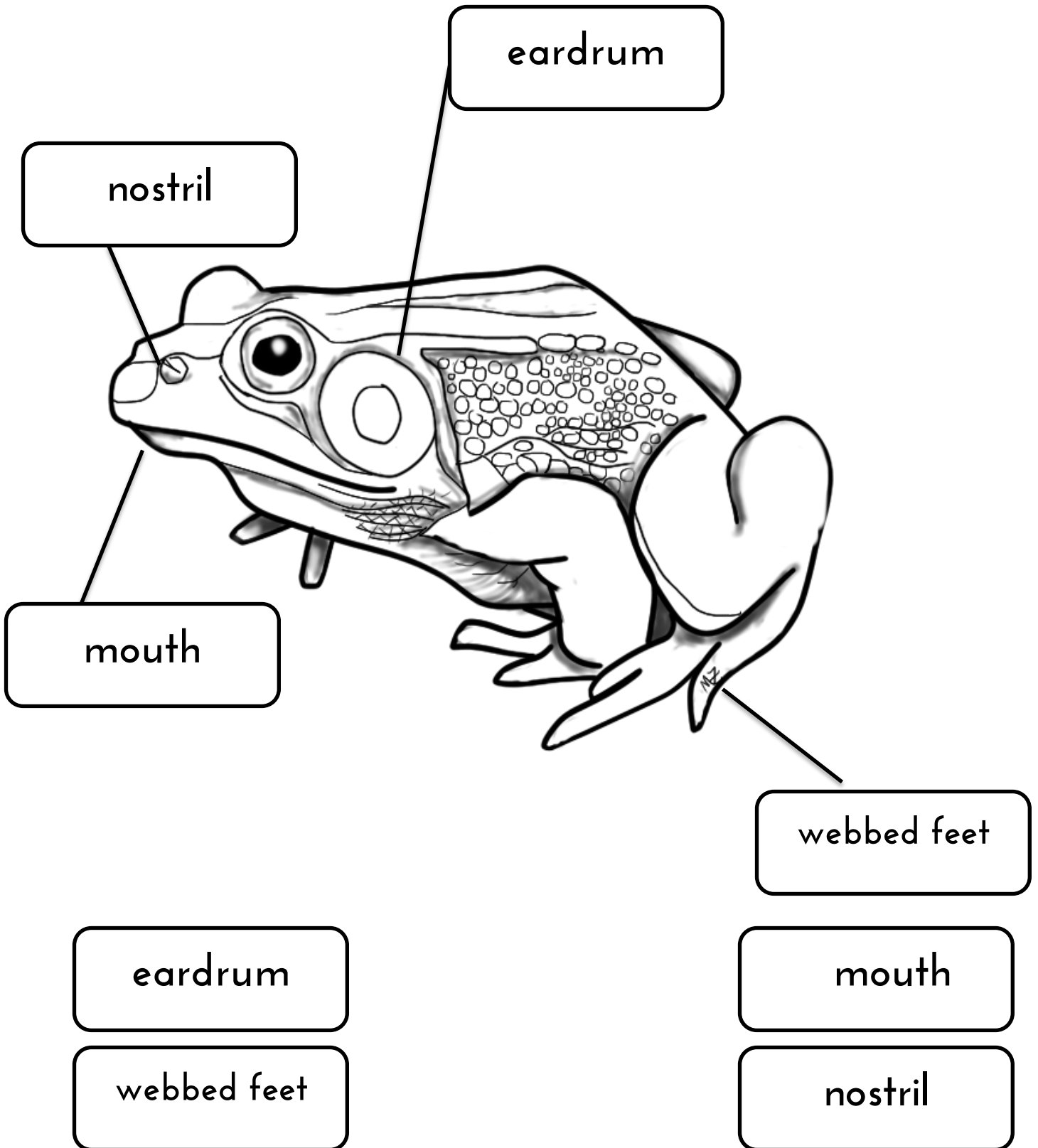
## Parts of a Frog

**Directions:** Cut out the labels below and glue them on the diagram below.

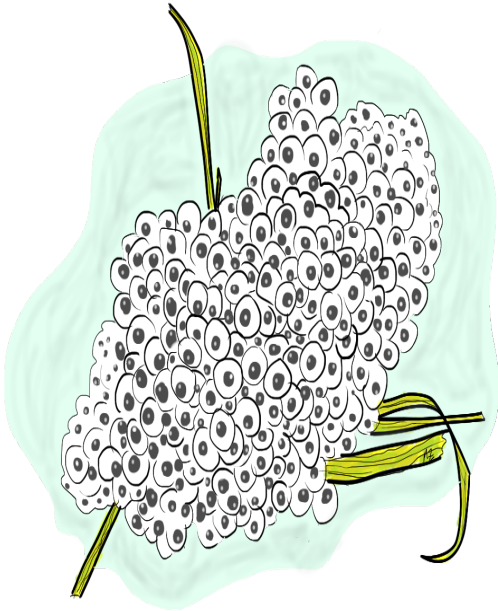


## Parts of a Frog

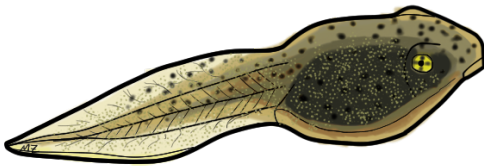
Directions: Cut out the labels below and glue them on the diagram below.



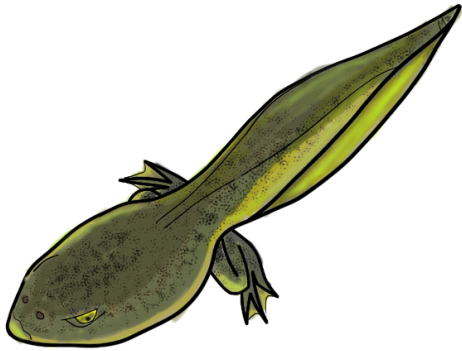
# Life Cycle of a Frog



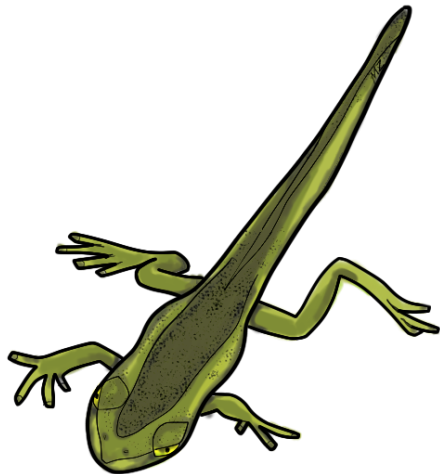
Frogs lay many eggs at one time. It can take 1-3 weeks for the eggs to hatch.



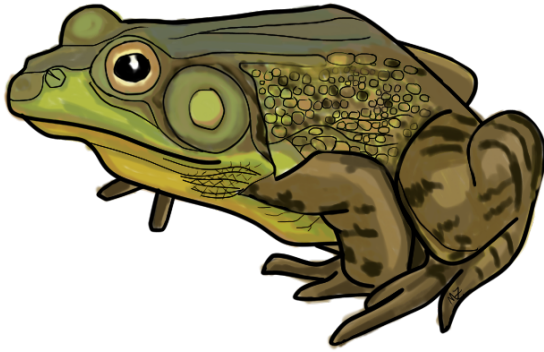
Baby frogs are called tadpoles. When they are born they have no legs. They must live in the water.



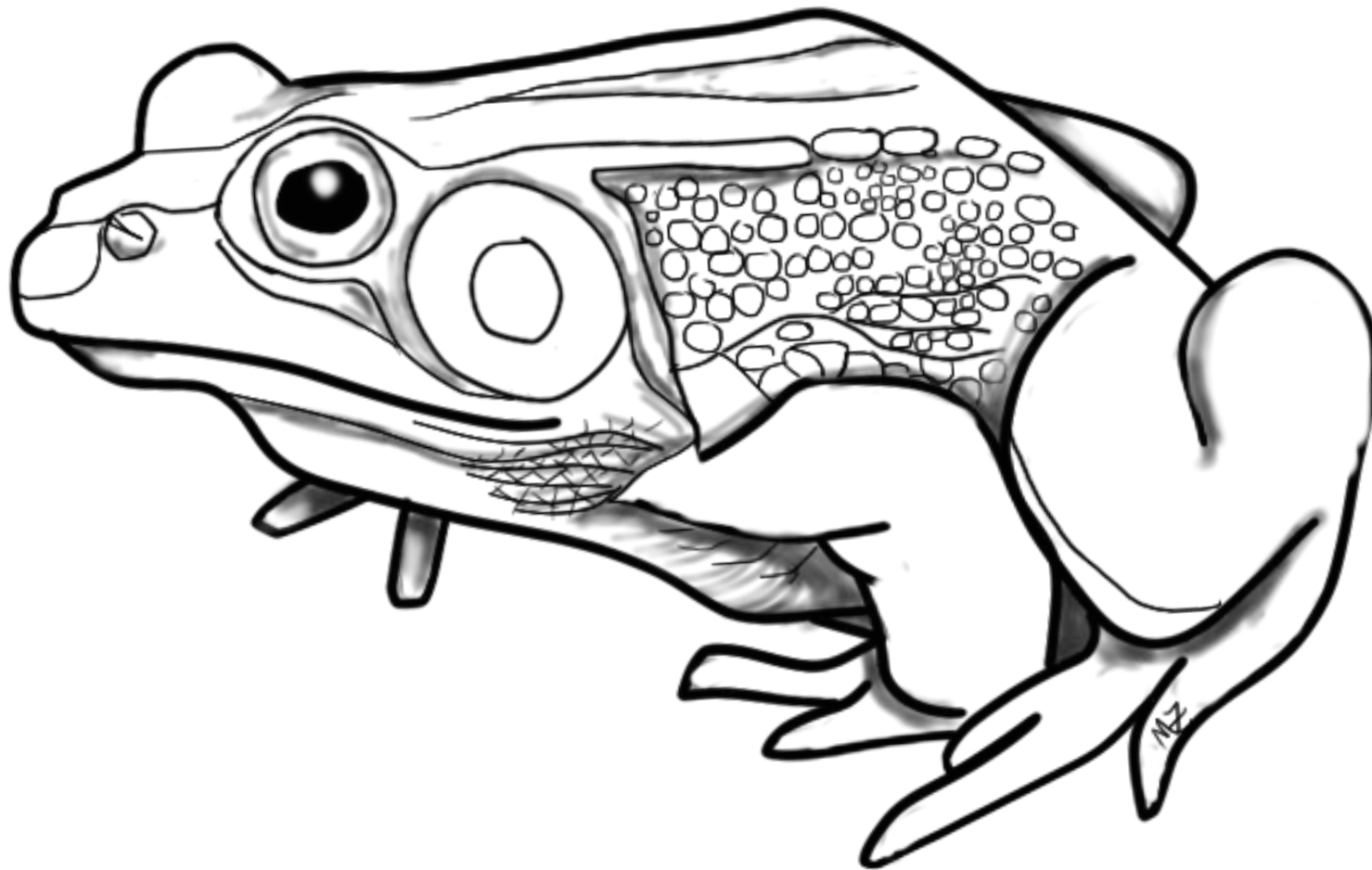
When a tadpole is about 6-9 weeks old, it will begin to grow legs.



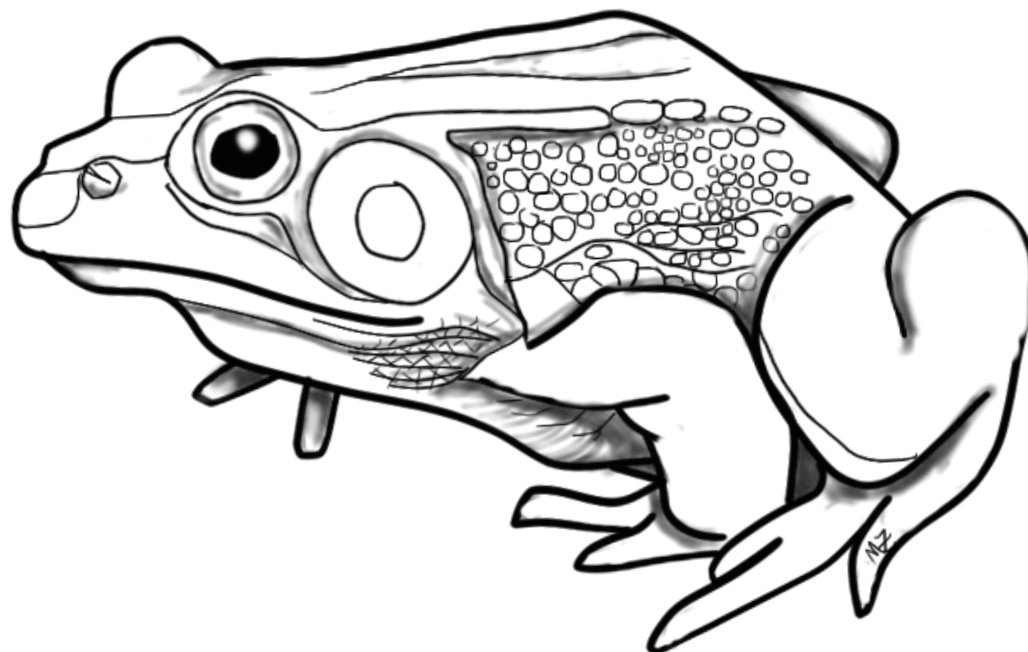
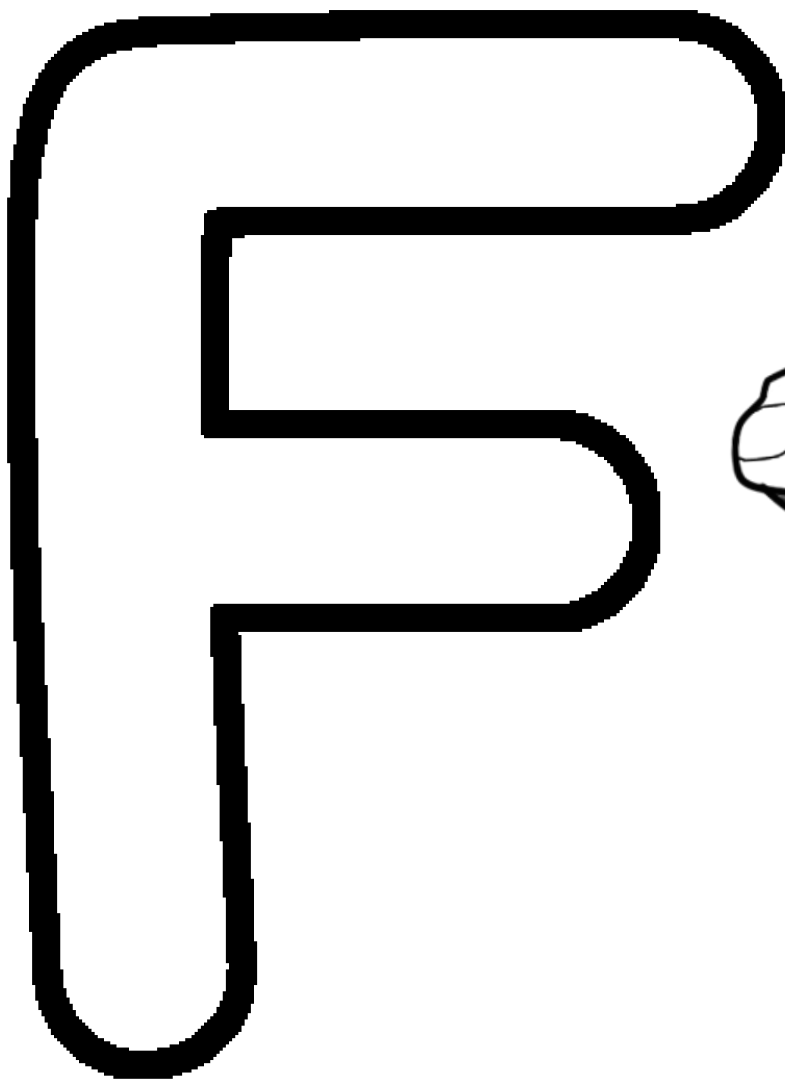
Soon, the frog has four legs, and its tail begins to get smaller. It's almost big enough to leave the water.



When a frog is fully grown, it will find a mate and start the cycle all over again.







Directions: Use do-a-dot markers to trace the letter. Color the frog picture.